



# Haringey Community Safety Partnership

Community Safety Partnership

11<sup>th</sup> December 2014



# Latest Performance – 10th November 2014

Haringey

YR - Haringey					Scorecard				Notes	
<b>MOPAC Crime</b>		<b>Offences</b>			<b>SD Rate</b>					
		<b>FY 11/12^</b>	<b>Current R12</b>	<b>% Chg</b>	<b>Target</b>	<b>FY 11/12</b>	<b>Current R12</b>			
<b>MOPAC 7</b>		<b>15,686</b>	<b>12,949</b>	<b>-17.4 %</b>		11.9%	14.8%			
Burglary		3,649	2,989	-18.1 %		12.6%	7.8%			
Criminal Damage		2,748	2,159	-21.4 %		11.5%	18.4%			
Robbery		1,497	1,021	-31.8 %		18.4%	11.9%			
Theft From MV		3,040	2,229	-26.7 %		3.6%	4.6%			
Theft/Taking Of MV		1,284	766	-40.3 %		6.1%	6.5%			
Theft From Person		1,204	1,138	-5.5 %		3.2%	3.5%			
Violence With Injury		2,264	2,647	+16.9 %		26.2%	36.6%			
<b>Increase Confidence</b>	<b>Target</b>	<b>Q4 12</b>	<b>Q4 13</b>	<b>% Chg</b>	<b>Reduce Cost</b>	<b>Target</b>	<b>Previous R12</b>	<b>Current R12</b>	<b>% Chg</b>	
Police in my local area do a good or excellent job	66%	55%	60%	+5.0% pt	Delivery of the agreed 2013/14 Budget					
<b>Crime Type</b>	<b>Target</b>	<b>Offences</b>			<b>Weekly Excppts</b>	<b>Trends</b>	<b>SD Rate</b>		<b>Primary SD Rate</b>	
		<b>Previous R12</b>	<b>Current R12</b>	<b>% Chg</b>			<b>Previous R12</b>	<b>Current R12</b>	<b>Previous R12</b>	<b>Current R12</b>
<b>TNO</b>		<b>21,428</b>	<b>23,427</b>	<b>+9.3 %</b>			20.9%	20.3%	19.4%	19.9%
State-based		1,679	1,755	+4.5 %			86.8%	87.6%	86.7%	87.6%
Victim-based		19,749	21,669	+9.7 %			15.3%	14.8%	13.7%	14.5%
<b>Burglary</b>	<b>-5.0%</b>	<b>2,703</b>	<b>2,989</b>	<b>+10.6 %</b>			16.1%	7.8%	6.8%	6.5%
Burglary In a Dwelling		1,909	2,252	+18.0 %			18.1%	6.9%	5.6%	5.3%
Burglary In Other Buildings		794	737	-7.2 %			11.5%	10.6%	9.6%	10.2%
<b>Criminal Damage</b>	<b>0.0%</b>	<b>1,846</b>	<b>2,159</b>	<b>+17.0 %</b>			16.3%	18.4%	16.3%	18.3%
<b>Robbery</b>	<b>-5.0%</b>	<b>938</b>	<b>1,021</b>	<b>+8.8 %</b>			20.4%	11.9%	20.4%	11.9%
Personal Robbery		869	961	+10.6 %			19.4%	11.6%	19.4%	11.6%
Business Robbery		69	60	-13.0 %			31.9%	18.3%	31.9%	18.3%
Robbery of mobile phone*		469	416	-11.3 %			23.0%	13.5%	-	-
<b>Theft Of/From MV</b>		<b>3,328</b>	<b>2,995</b>	<b>-10.0 %</b>			5.0%	5.1%	3.4%	4.0%
Theft From MV	<b>-5.0%</b>	2,497	2,229	-10.7 %			4.4%	4.6%	2.2%	3.2%
Theft/Taking Of MV	<b>0.0%</b>	831	766	-7.8 %			7.0%	6.5%	7.0%	6.3%
<b>Theft From Person</b>	<b>-8.0%</b>	<b>1,479</b>	<b>1,138</b>	<b>-23.1 %</b>			2.6%	3.5%	2.6%	3.5%
Theft of mobile phone*		1,032	759	-26.5 %			2.0%	4.0%	-	-
<b>Violence With Injury</b>	<b>-6.0%</b>	<b>1,981</b>	<b>2,647</b>	<b>+33.6 %</b>			35.0%	36.6%	34.9%	36.6%
Non-Domestic Abuse VWI		1,285	1,765	+37.4 %			27.5%	29.7%	27.5%	29.7%
Domestic Abuse VWI		696	882	+26.7 %			48.7%	50.6%	48.7%	50.6%
<b>Domestic Abuse</b>		<b>1,728</b>	<b>2,166</b>	<b>+25.3 %</b>			43.1%	38.9%	43.1%	38.9%
<b>ASB</b>		<b>Previous R12</b>	<b>Current R12</b>	<b>% Chg</b>	<b>Key</b>					
Total ASB Demand		12,008	9,967	-17.0 %	Performance is at or above target					
ASB Repeat Callers		320	277	-13.4 %	Performance is below target but is at least half the improvement required to meet the target compared to the previous reporting period					
<b>CCC Despatch</b>		<b>Previous R12</b>	<b>Current R12</b>	<b>% Chg</b>	Performance is below target and less than half the improvement required to meet the target					
I Calls within 15 mins		94.8%	94.0%	-0.8% pt	Green is improving performance					
S Calls within 60 mins		92.3%	88.7%	-3.7% pt	Red is worsening performance					
<b>Satisfaction</b>		<b>Q4 12</b>	<b>Q4 13</b>	<b>% Chg</b>	Sky Blue indicates a SD Rate increase on last year					
<b>Overall Satisfaction</b>		<b>75.0%</b>	<b>78.0%</b>	<b>+3.0% pt</b>	Plum indicates a SD Rate decrease on last year					
Burglary		85.0%	83.0%	-2.0% pt						
Motor Vehicle Crime		72.0%	82.0%	+10.0% pt						
Violent Crime		69.0%	69.0%	0.0% pt						



# Non-MOPAC 7 Recorded Crime

Oct 13 – Sep 14

Haringey Council

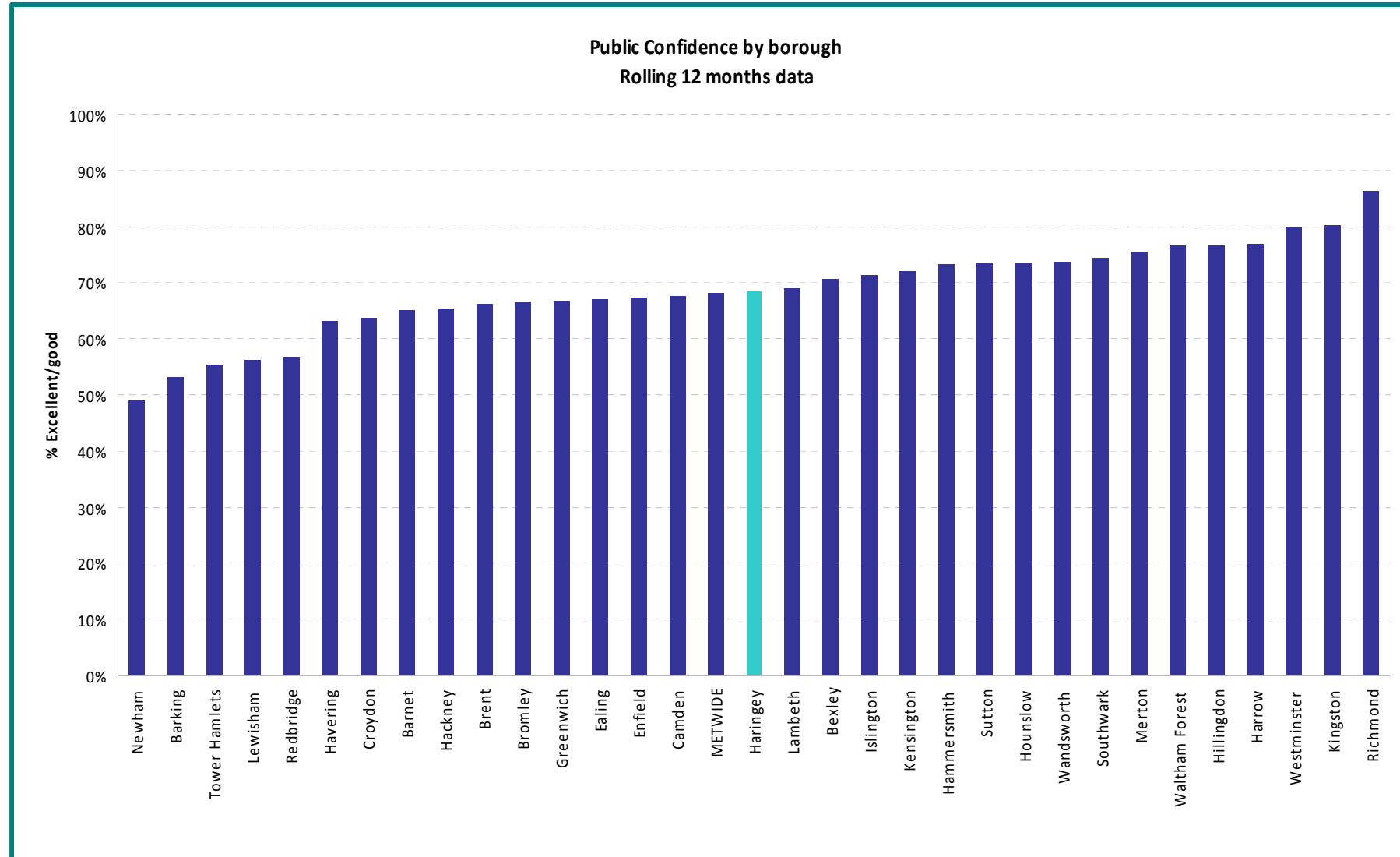
	2012/13	2013/14	% change	MPS % change
Total Notifiable Offences (TNOs)*	21,527	23,156	7.6%	-4.8%
<b>Other Crime</b>				
Rape	120	182	51.7%	29.6%
Serious Sexual Offences	272	372	36.8%	21.1%
Youth Violence	412	522	26.7%	9.9%
Serious Youth Violence	184	233	26.6%	10.6%
Gun Crime	72	51	-29.2%	-16.0%
Knife Crime	437	456	4.3%	-12.4%
Knife Crime with Injury	165	154	-6.7%	2.0%
Domestic Abuse	1,726	2,109	22.2%	20.2%
Homophobic Crime	26	25	-3.8%	22.7%
Racist & Religious Hate Crime	263	439	66.9%	16.1%
Disability Hate Crime	1	1	0.0%	9.8%
Transgender Hate Crime	2	3	50.0%	72.1%
Faith Hate Crime	22	45	104.5%	21.7%



Haringey Council

# Q1 2014/5 Confidence

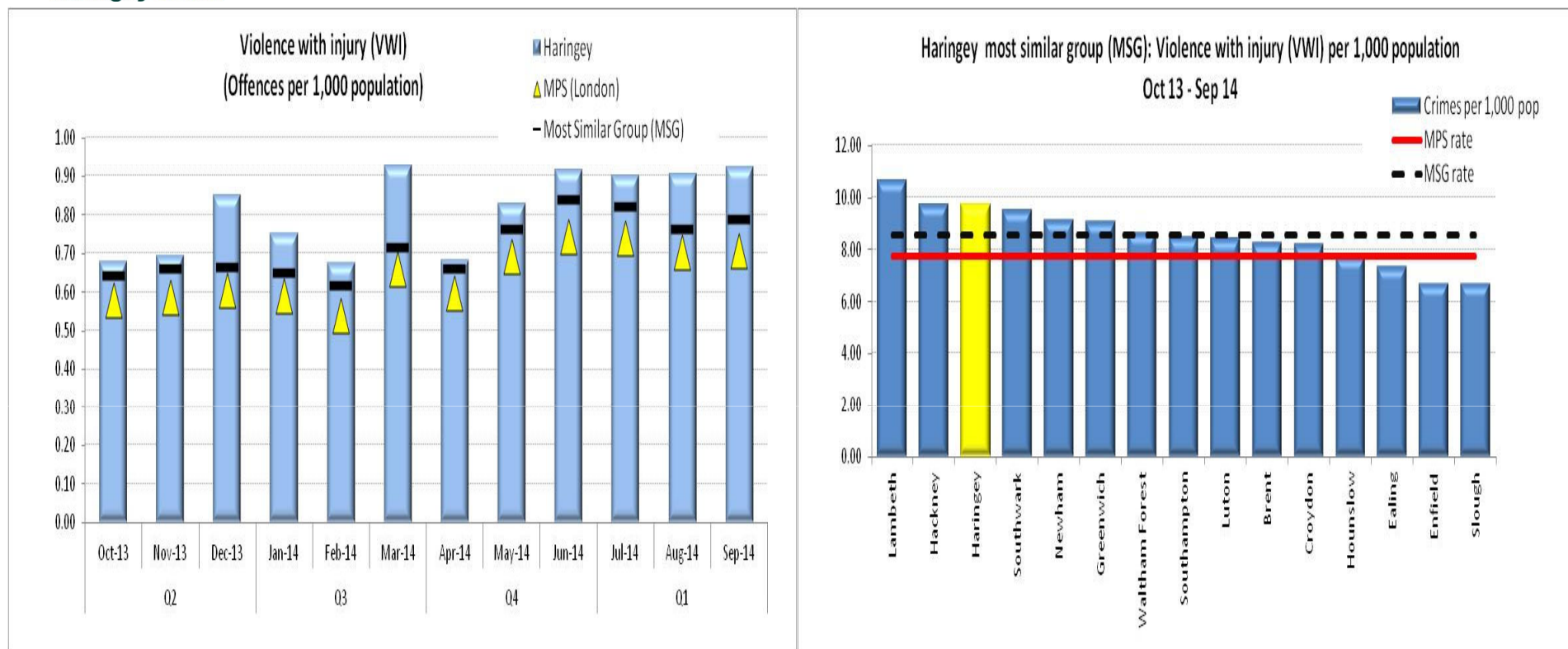
## London borough comparison





# MOPAC7 indicators: Violence with injury (VWI) Oct13 – Sep14

Haringey Council

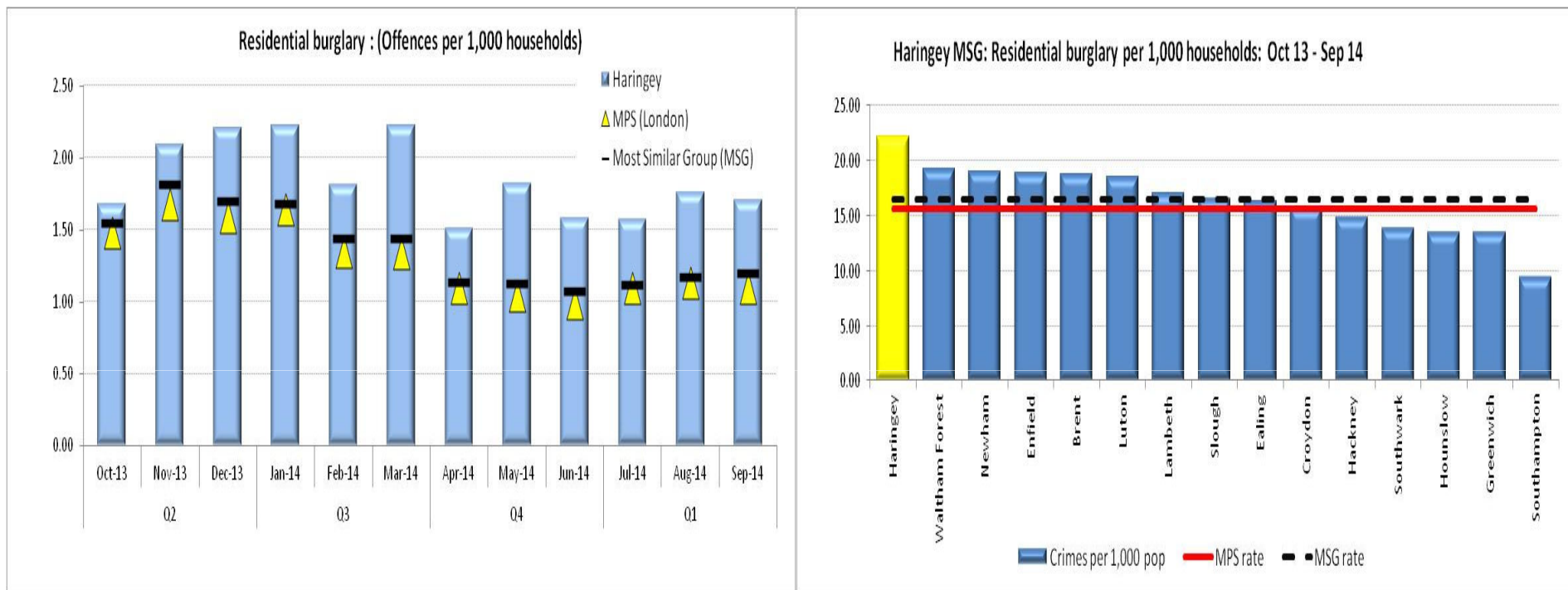


- 28% increase in VWI in the 12 months to Sep14 (increase from 1,998 to 2,563) – highest increase in MSG however both London and MSG increased by 17% & 15% respectively
- 718 offences in Q2 (Jul14-Sep14), over a third as many more (38% or 196 additional) compared to Q2 2013
- With the exception of Mar14, VWI is currently the highest it's been for three years
- Key issue is an increase in the more violent wards and areas of public disorder in Noel Park, Northumberland Park and Seven Sisters
- The partnership is currently running Operation Equinox as a key mitigating factor. An early outcome update will be given at the meeting. Police have also changed shifts to supply further presence in key are



Haringey Council

# MOPAC7 indicators: Residential burglary Oct 13- Sep 14



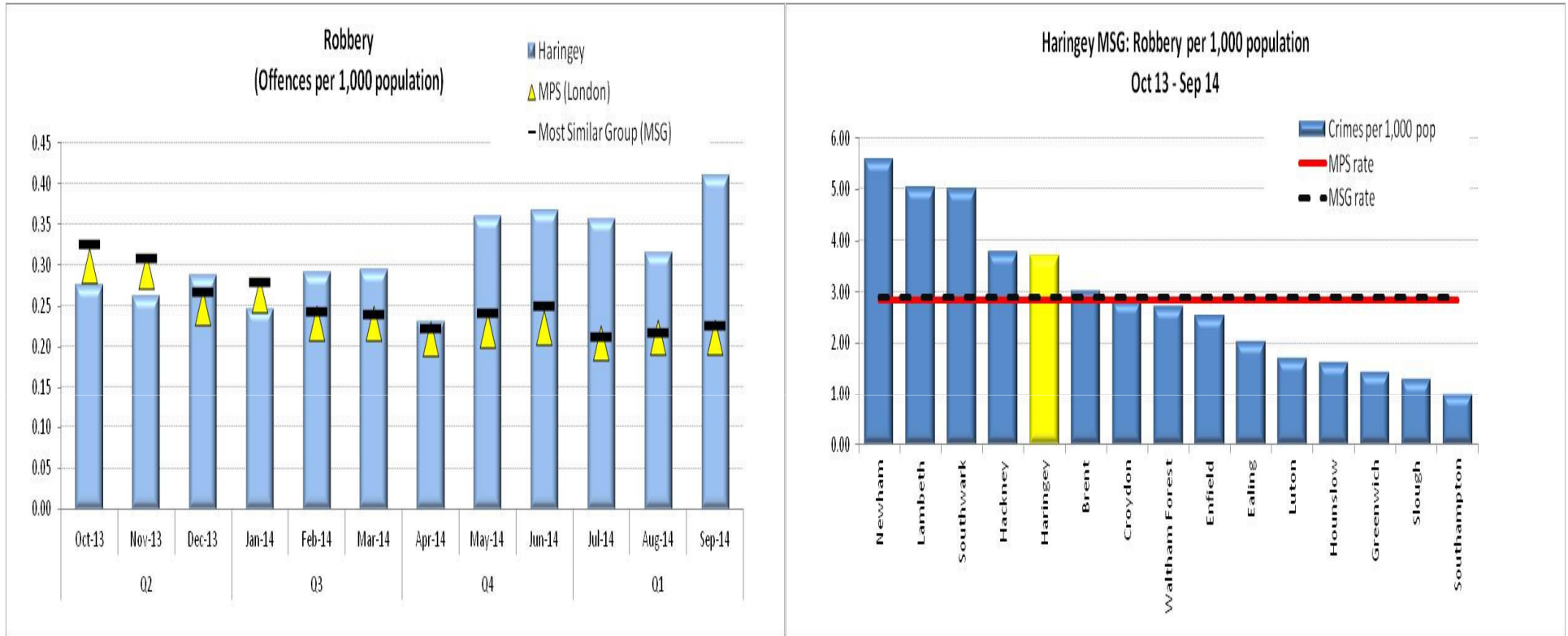
- 15% increase – only borough in MSG to show an increase during this period – London 12% & MSG 11% fall
- Haringey's residential burglary rate of 22.9 (per thousand households) the highest in London
- There has been an additional hotspot in Noel Park which we are looking into
- Operation Bumblebee was re-invigorated; Neighbourhood Watch targeting messages
- Increased lock fitting, police visits and securing neighbouring properties
- Neighbourhood police teams are looking at crime prevention signage up in localised areas
- We need to get messages out earlier to allow lead in time



Haringey Council

# MOPAC7 indicators: Robbery

## Oct 13 – Sep 14



- Robberies have risen since Apr14 recording a 27% (61 additional offences) increase in Q2 compared to Q2 2013
- Robbery has risen by 9% from 920 - 976 in rolling 12 months to Sep14: the only borough in it's MSG to record an increase compared to reductions of 25% and 28% in London and our MSG respectively
- Haringey's Robbery rate of 3.7 per thousand population is 5<sup>th</sup> highest in it's MSG & 9<sup>th</sup> highest in London
- Haringey police intend to deploy proactive investigative teams in the community to impact on this

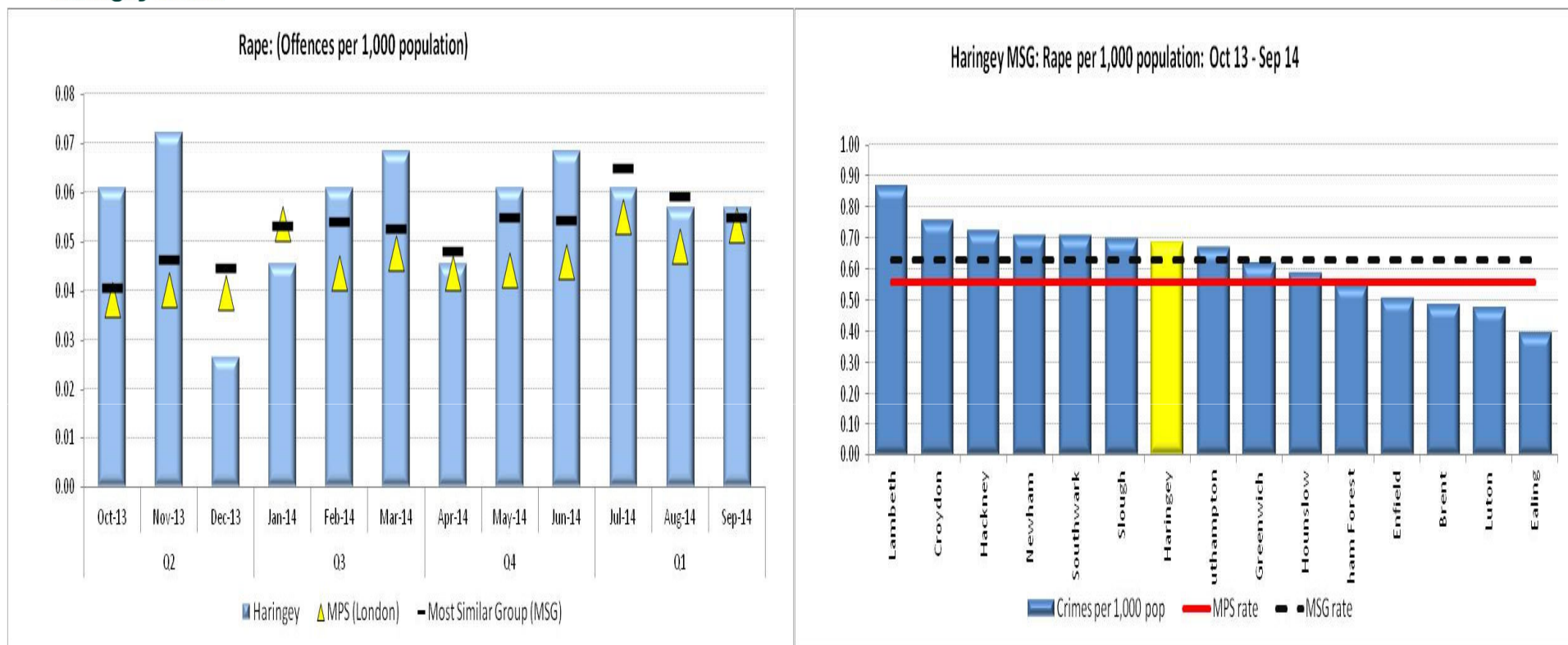




Haringey Council

# Other key concerns: Reported rape

## Oct 13 – Sep 14

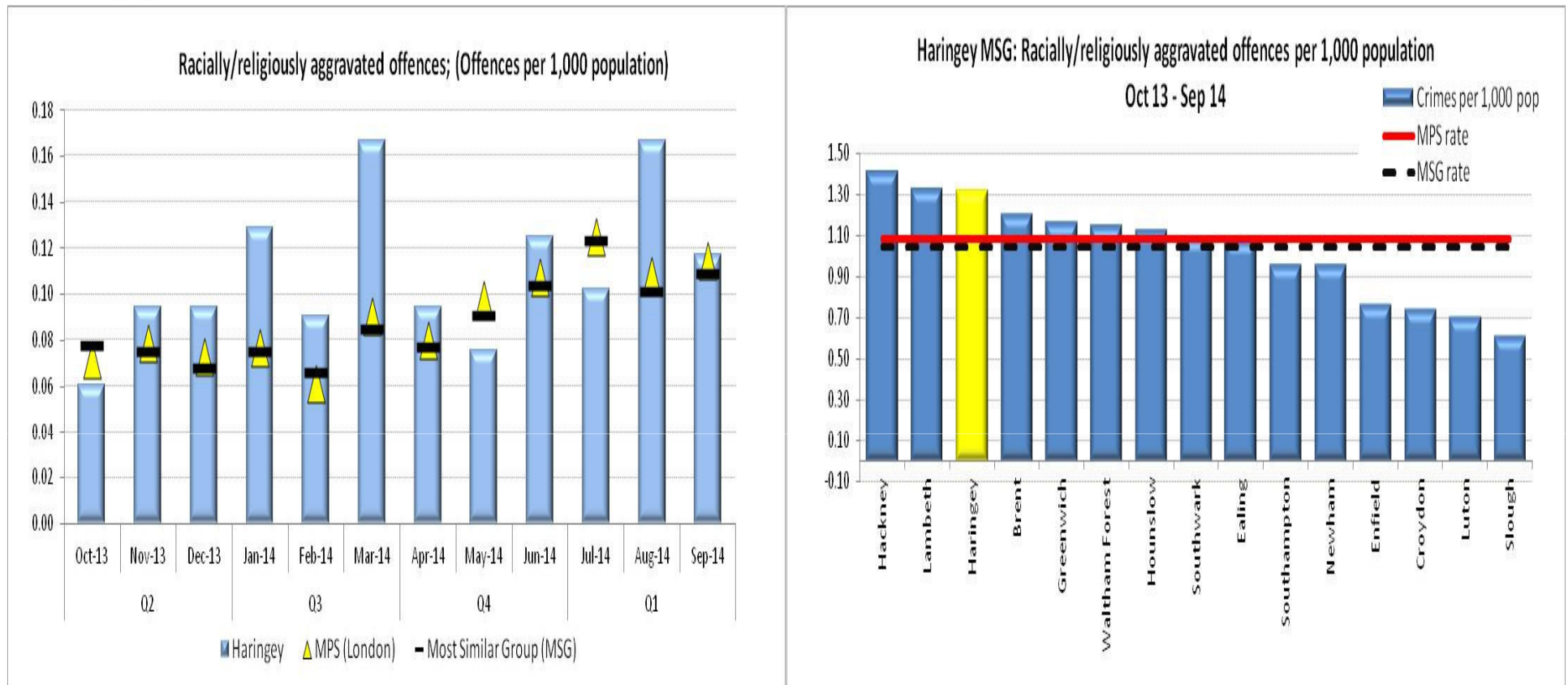


- 180 reported rape offences representing a significant 55% (65 additional offences) increase in the 12 months to Sep14
- Highest increase in MSG although all boroughs in MSG recorded increases - London and MSG also recorded increases of 33% and 32% respectively for the same period
- Haringey’s reported rape rate of 0.68 per thousand population 8th highest in London
- This may be a combination of confidence, media profile and local services being better known





## Other key concerns: Racially/religiously aggravated offences Oct 13 – Sep 14



- 348 Racial/religious aggravated offences representing a significant 84% increase (159 additional offences) in the 12 months to Sep14
- Highest increase in MSG although only one borough in the MSG recorded a reduction - London and MSG recorded increases of 25% and 28% respectively for the same period
- Racial/religious aggravated offences have risen steeply since Sep13 and Q2 more than doubled (137% increase or 59 additional offences) compared to Q2 in 2013
- Partners and the police are working on breaking down the specific driving factors behind this. CSP partners may have evidence and views to bring to the meeting



# Police ASB related emergency calls

## Oct 13 – Sep 14

Area	CSP	Oct12- Sep13	Oct13- Sep14	+/-	+/- (%)	Rank (volume)	Rank (+/-)
East	Tower Hamlets	20,527	18,555	-1,972	-9.6	1	1
	Newham	17,128	12,965	-4,163	-24.3	3	23
	Hackney	13,950	11,162	-2,788	-20.0	6	11
	Enfield	12,861	9,754	-3,107	-24.2	13	21
	Haringey	12,192	10,146	-2,046	-16.8	12	5
	Redbridge	10,733	8,263	-2,470	-23.0	20	18
	Waltham Forest	10,757	9,256	-1,501	-14.0	16	3
	Barking & Dagenham	8,502	6,632	-1,870	-22.0	24	14
Havering	7,742	5,498	-2,244	-29.0	28	29	
North	Ealing	14,495	11,786	-2,709	-18.7	5	8
	Camden	13,524	10,713	-2,811	-20.8	9	12
	Brent	12,738	10,523	-2,215	-17.4	10	6
	Barnet	12,781	10,361	-2,420	-18.9	11	10
	Islington	11,555	9,457	-2,098	-18.2	14	7
	Harrow	7,535	5,785	-1,750	-23.2	26	19
South	Lambeth	17,300	12,660	-4,640	-26.8	4	27
	Croydon	15,700	11,065	-4,635	-29.5	7	31
	Southwark	14,969	10,942	-4,027	-26.9	8	28
	Lewisham	12,446	9,437	-3,009	-24.2	15	22
	Greenwich	10,491	7,339	-3,152	-30.0	22	32
	Bromley	9,924	7,344	-2,580	-26.0	21	25
Bexley	7,653	5,636	-2,017	-26.4	27	26	
West	Hillingdon	11,509	8,950	-2,559	-22.2	18	15
	Hounslow	11,642	8,979	-2,663	-22.9	17	16
	Wandsworth	11,363	8,682	-2,681	-23.6	19	20
	Hammersmith & Fulham	8,726	6,857	-1,869	-21.4	23	13
	Kensington & Chelsea	7,578	6,429	-1,149	-15.2	25	4
	Merton	6,793	5,234	-1,559	-23.0	29	17
	Sutton	6,267	4,431	-1,836	-29.3	31	30
	Richmond Upon Thames	5,715	4,244	-1,471	-25.7	32	24
	Kingston Upon Thames	5,471	4,448	-1,023	-18.7	30	9
Westminster	20,402	17,962	-2,440	-12.0	2	2	
Heathrow	1,288	980	-308	-23.9	...	...	
Other	576	348	-228	-39.6	...	...	
<b>London (MPS)</b>	<b>372,833</b>	<b>292,823</b>	<b>-80,010</b>	<b>-21.5</b>			

### REPORTED ASB CALLS TO THE POLICE

- **Performance against target**
- Q2 performance (10,146) shows 7% reduction compared to the 5% reduction target of 10,950
- **Year-on-year performance:**
- 10,146 ASB calls in the 12 months to Sep14 representing a 17% annual reduction (2,046 fewer offences)
- Improvement compared to Q1 performance of 8%
- Falling trend in call volumes over the last three quarters
- 12th highest volume of calls remains unchanged from Q1 however
- All London boroughs recorded reductions in the 12 months to Sep14
- Overall ASB related emergency calls across London fell by 22%.
- **ASB REPEAT CALLS TO THE POLICE**
- Local data for the 12 months to Sep14 shows 574 repeat calls, 22 of which had more than 10 calls in a 24 week period. This is an increase of 4 calls compared to the preceding quarter



Haringey Council

# Overall Assessment

- Significant increases seen in MOPAC7 offences for Violence with injury (28%), Residential burglary (15%) and to a lesser extent Robbery (9%) - rolling 12 month period to Sep14
- Reported Rape offences have increased by over half (55%), possible reasons include
  - Recent changes reduced the number offences of offences categorised as 'no crimes'
  - More allegations of rape being recorded from emergency call data
  - Increased confidence in reporting rape due to successful high-profile cases
  - National picture shows an increase in reporting
- As most rape goes unreported this increase can be seen as being positive
- Reported Racially/religious aggravated crime has risen significantly by 84% more than London increase of 25%
  - Offences tend to be centred in town centres and transport interchanges, specifically Noel Park, Tottenham Green and Tottenham Hale wards
  - The Polish community figure as both victims and perpetrators
- The increase in ASB repeat calls in Q2 from 18 to 22 is most likely linked to in increase in calls from commercial premises and more callers linked with mental health issues



# Haringey peer group CSPs

**Haringey's Most Similar Group -  
MSG  
(15 members inc. Haringey)**

**Youth Offending  
Team - YOT Family  
(10 members inc.  
Haringey)**

**Haringey**

Brent  
Croydon  
Ealing  
Enfield  
Greenwich  
Hackney  
Hounslow  
Lambeth  
Newham  
Southwark  
Waltham Forest  
Luton - Bedfordshire  
Hampshire - Southampton  
Thames Valley - Slough

**Haringey**

Lewisham  
Greenwich  
Lambeth  
Waltham Forest  
Leicester City  
Southwark  
Newham  
Brent  
Hackney